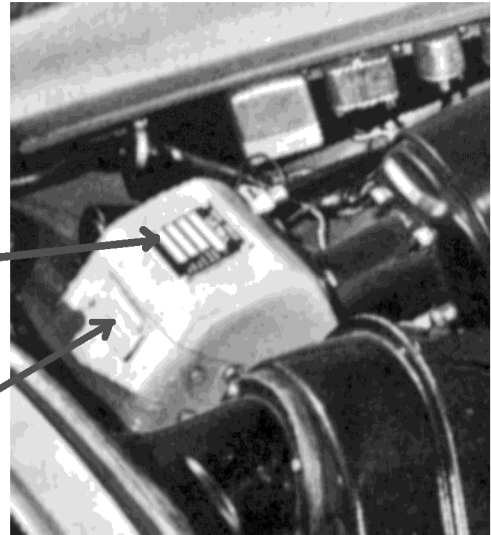
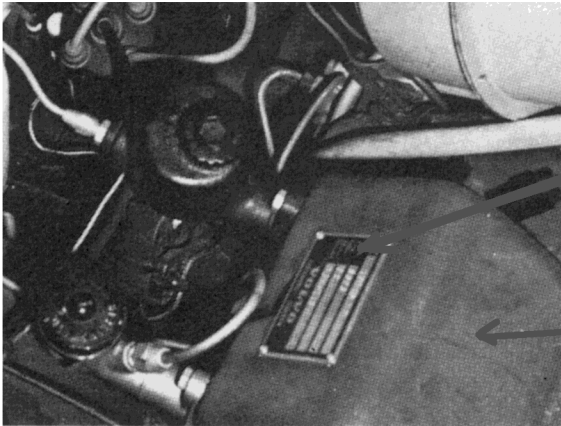


VOLVO 1800 PLATE LOCATIONS

LATE MODEL - 1969 & UP

EARLY MODELS - THRU 1968



DESIGNATION

BODY NO.

DESIGNATION PLATE INFORMATION

COUPES UP TILL CHASSIS NO. 20999

COUPES FROM CH# 21000 & ALL ES's

| | |
|-----------------|--|
| Typ | |
| Type | |
| Ch. Nr. | |
| Farg | |
| Colour | |
| Kladsel | |
| Upholst | |
| VOLVO | |
| GÖTEBORG SWEDEN | |

| | |
|-------------------|--|
| Typ | |
| Type | |
| Farg | |
| Colour | |
| Kladsel | |
| Upholst | |
| S- | |
| VOLVO | |
| GÖTEBORG - SWEDEN | |

**PLEASE COPY THE INFORMATION FROM THE PLATE ON YOUR CAR
IN THE BLANK SPACES ABOVE - IF BLANK WRITE IN BLANK**

ENTER NUMBER FROM BODY NUMBER PLATE HERE _____

ON LATER CARS ENTER NUMBER FROM

VIN NUMBER PLATE ON WINDSHIELD POST _____

(THE VIN NUMBER SHOULD BE THE SAME AS THE NO. ON YOUR TITLE OR REGISTRATION)

OWNERS NAME _____

ADDRESS _____

CITY _____

ST/PROV _____ ZIP/POST _____

COUNTRY (IF NOT USA) _____